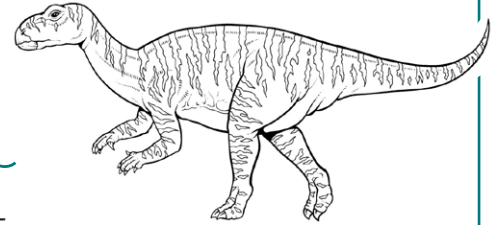
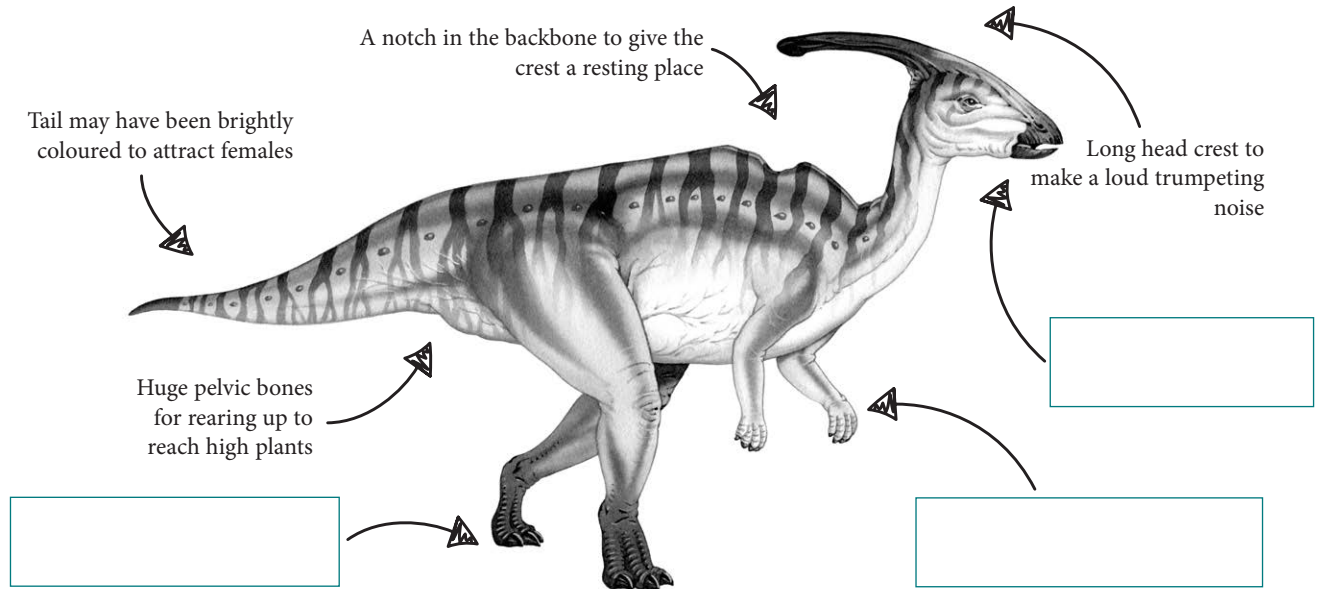


# First Facts Bird-footed Dinosaurs



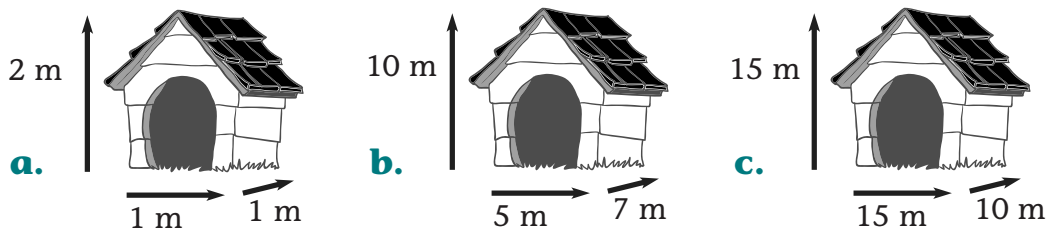
**1** This diagram already has some labels on it. Can you label the other parts of this dinosaur and say why you think it has this feature?



**2** Circle **True** or **False**:

- |                                                                                       |      |       |
|---------------------------------------------------------------------------------------|------|-------|
| <b>a.</b> All bird-footed dinosaurs were the same size                                | True | False |
| <b>b.</b> Bird-footed dinosaurs could walk on 2 legs                                  | True | False |
| <b>c.</b> Bird-footed dinosaurs were carnivores                                       | True | False |
| <b>d.</b> Bird-footed dinosaurs usually lived in herds                                | True | False |
| <b>e.</b> Bird-footed dinosaurs had very sharp teeth                                  | True | False |
| <b>f.</b> Bird-footed dinosaurs were only found in Australia, Asia and North America. | True | False |

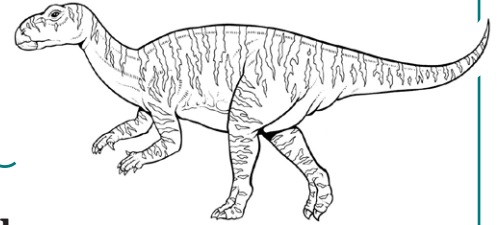
**3** If Tom was building a shelter for his pet **Iguanodon**, which one do you think would suit him best and why?



I would choose shelter \_\_\_\_\_  
because \_\_\_\_\_

NAME \_\_\_\_\_

# First Facts Bird-footed Dinosaurs



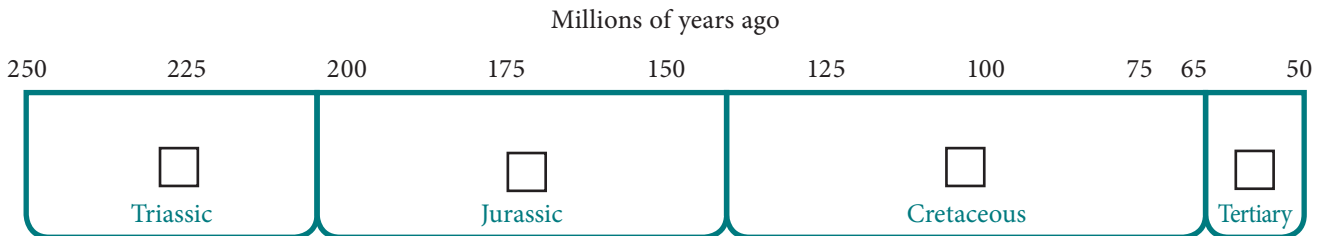
**4** Use the bird-footed dinosaurs book to help you complete the sentences:

- a. Bird-footed dinosaurs walked on \_\_\_\_\_ legs.
- b. Bird-footed dinosaurs ate \_\_\_\_\_.
- c. Bird-footed dinosaurs were \_\_\_\_\_ blooded.
- d. Bird-footed dinosaurs had horny \_\_\_\_\_.
- e. Bird-footed dinosaurs laid \_\_\_\_\_.

**5** Complete this statement:

All bird-footed dinosaurs \_\_\_\_\_ and \_\_\_\_\_.

**6** Look at the timelines in the book. Tick the periods in which bird-footed dinosaurs lived:



NAME \_\_\_\_\_

**7** Look at the size of the Iguanodon compared to the Lesothosaurus on page 8.

How many little dinosaurs do you think would have to stand on top of each other to reach the height of the bigger? Before you cut and test them, what is your estimate? \_\_\_\_\_ What was the result? \_\_\_\_\_

