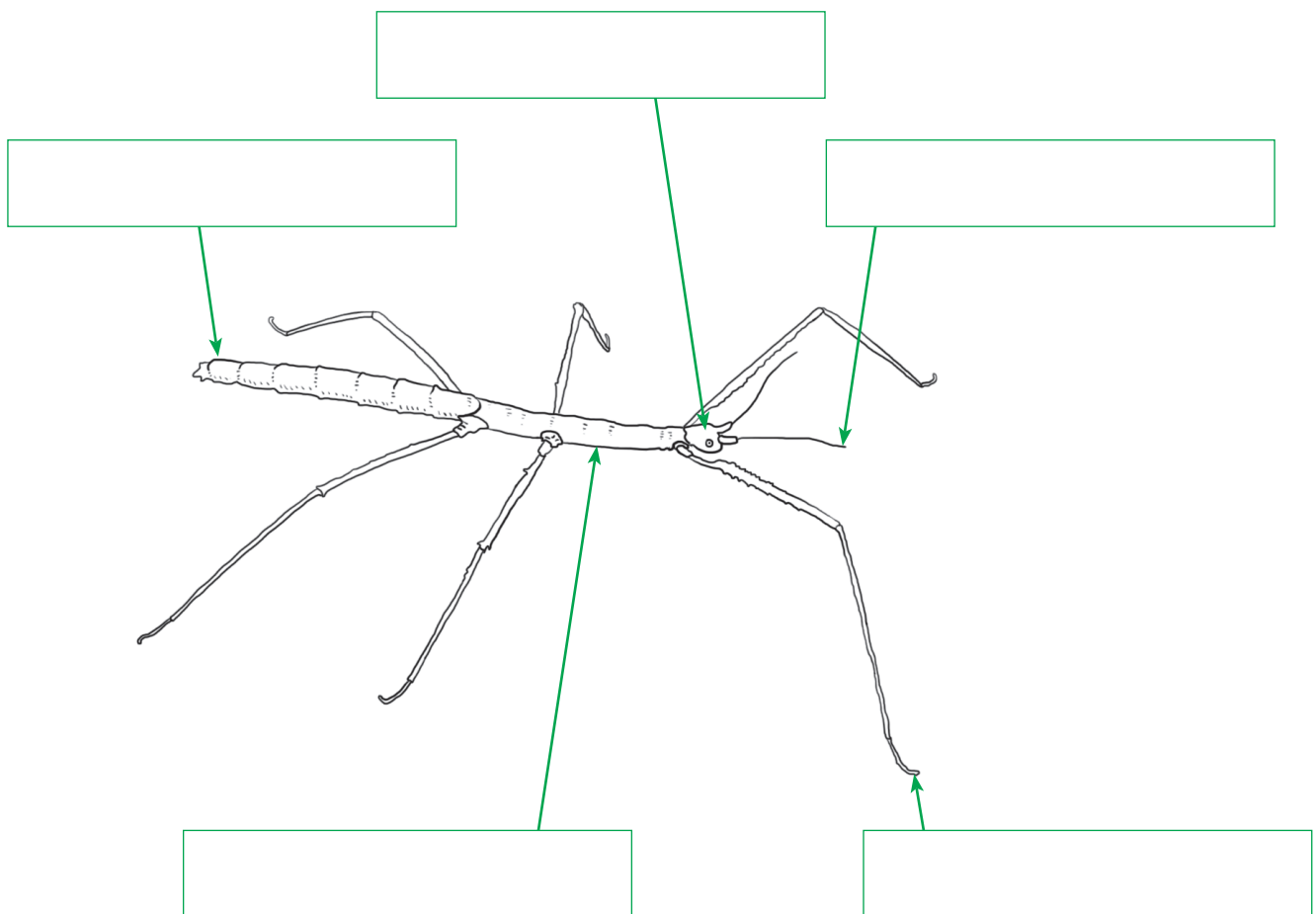


# Sneaky Stick Insects

Use the *Sneaky Stick Insects* book to help you label this diagram of a stick insect correctly using the words below.

- Legs** — All insects have six of these.  
(Just label one)
- Antennae** — Found on an insect's head.  
Assists with touch and taste.
- Head** — Contains the brain, eyes and mouth
- Abdomen** — The last section of the body  
containing the stomach
- Thorax** — Found between the head and the  
abdomen. Legs attach to it.



NAME

# Sneaky Stick Insects



Read the *Sneaky Stick Insects* book to find out which insects the Description and Behaviour boxes refer to.

## Insects

Goliath Stick Insect

Spiny Leaf Stick Insect

Granny's Cloak Moth

Children's Stick Insect

### DESCRIPTION

Large, brownish-grey moth with eye spots and scalloped pattern

### BEHAVIOUR

Likes to blend in with dry leaves

Insect name: \_\_\_\_\_

### DESCRIPTION

Females look like leaves and can be bright green, yellowish or even pinky

### BEHAVIOUR

Likes to hide in trees with large green leaves

Insect name: \_\_\_\_\_

### DESCRIPTION

Bright green and very large; has yellow patches on the head, legs and thorax

### BEHAVIOUR

Likes to blend in with tree trunks

Insect name: \_\_\_\_\_

### DESCRIPTION

Looks like brown, curled-up leaves

### BEHAVIOUR

Likes to hide in gum trees

Insect name: \_\_\_\_\_

NAME