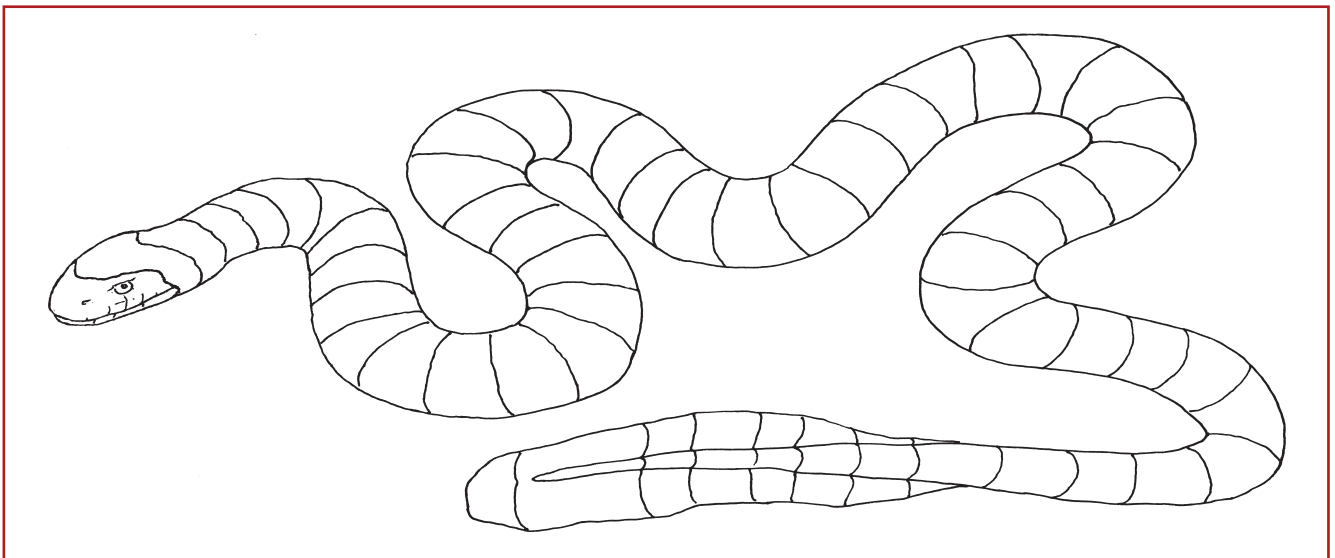


Banjo the Banded Sea Snake

Answer **True** or **False** to these statements about facts from the *Banjo the Banded Sea Snake* story. More information can be found on the inside front and back covers.

- 1 Banded sea snakes (BSS) are also called kraits. _____
- 2 BSS eat jellyfish. _____
- 3 BSS need to come out of the ocean to drink fresh water. _____
- 4 BSS lay their eggs in the water. _____
- 5 BSS protect themselves by pretending their tail is their head. _____
- 6 Sea eagles hunt BSS. _____
- 7 BSS like to swim out in the open ocean. _____
- 8 Triggerfish like to eat BSS. _____
- 9 BSS often swim with larger fish. _____
- 10 Eagles catch BSS with their beaks. _____

Look at the picture in the book and colour this banded sea snake correctly.



Banjo the Banded Sea Snake

Read the book *Banjo the Banded Sea Snake* to find out which animals the description and behaviour boxes refer to. Cut out the picture of each animal and glue it next to your answer.

| | |
|--|-------------------|
| DESCRIPTION | Glue picture here |
| Long, banded reptile that lives in the sea among coral in parts of the Indian and Pacific Oceans | |
| BEHAVIOUR | |
| Moves its tail in a way that confuses predators into thinking that its tail is its head | |
| NAME | |

| | |
|---|-------------------|
| DESCRIPTION | Glue picture here |
| Large bird with strong claws and beak that lives near the sea | |
| BEHAVIOUR | |
| Hunts mainly for fish over the ocean. Some species are very large and can have a wingspan of over two metres. | |
| NAME | |

| | |
|--|-------------------|
| DESCRIPTION | Glue picture here |
| Brightly coloured fish often marked by lines and spots that inhabit tropical and subtropical oceans throughout the world | |
| BEHAVIOUR | |
| Eats mainly slow-moving, bottom-dwelling creatures like crabs, molluscs and sea anemones with its very strong teeth | |
| NAME | |

NAME

Banjo the Banded Sea Snake © 2015 Pascal Press. All rights reserved.

